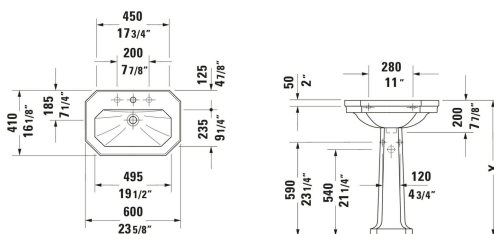


1930 Wall Mounted Sink # 0438600000 / 0438600087

| < 23 5/8 " > |



Wall Mounted Sink	Dimension	Weight	Order number
Octagonal, Includes faucet deck: Yes, Overflow: Yes, Underside glazed, Back side glazed: No, 23 5/8 ", Internal dimensions: 19 1/2 "x9 1/4 ", cUPC listed: Yes			
Colors			
00 White High Gloss			
Variant			
● White High Gloss, Number of basins: 1 Middle, Number of faucet holes: 1 Middle	23 5/8 "x16 1/8 "	29.762 lb	0438600000
●●● White High Gloss, Number of basins: 1 Middle, Number of faucet holes: 3 Middle, Left, Right, Soap dispenser position: Left	23 5/8 "x16 1/8 "	29.762 lb	0438600087
Accessory			
Sink Drain Ø 2 1/2 "	Ø 2 1/2 "	0.75 lb	005052
Suitable products			
Pedestal Installation Type: Floorstanding, 10 5/8 x 10 1/4 "	10 5/8 x 10 1/4 "		085791

All drawings contain the necessary measurements which are subject to standard tolerances. They are stated in inch & mm and are non-binding. Exact measurements, in particular for customized installation scenarios, can only be taken from the finished ceramic piece.